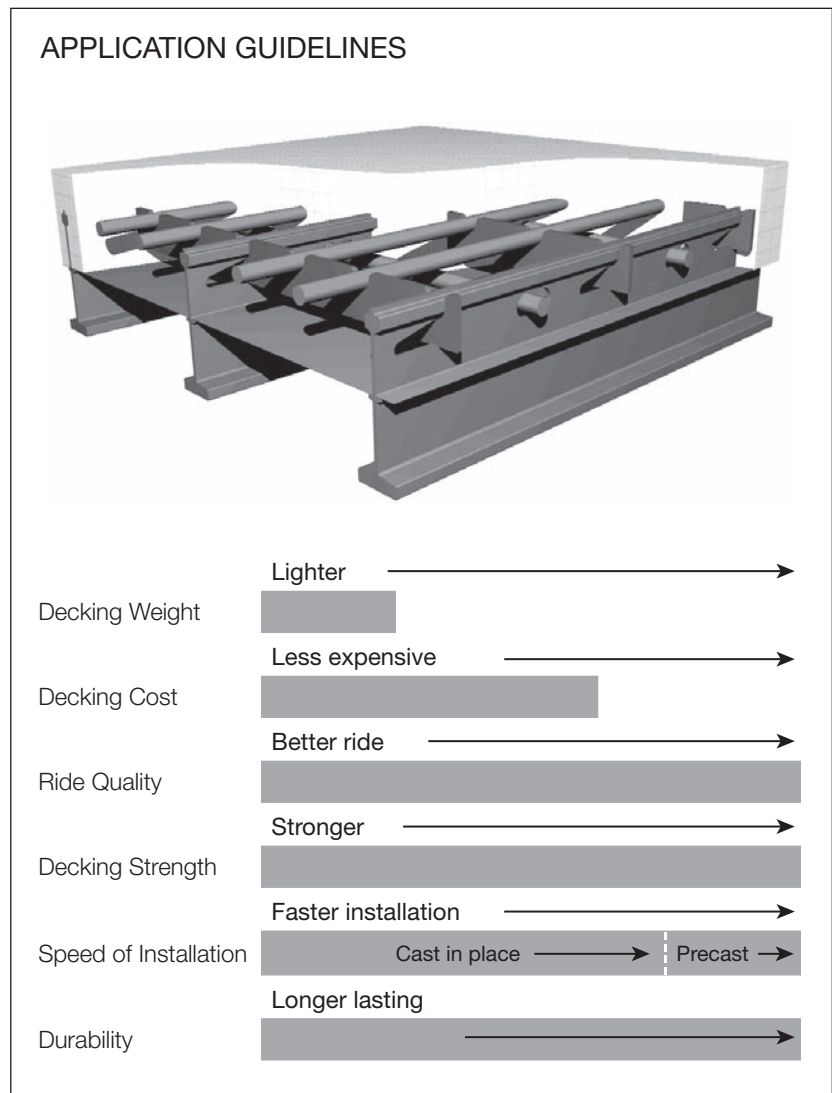


The 6.5" Half-Depth grid reinforced concrete bridge decking is the latest design innovation from L.B. Foster. The increased decking depth offers improved stiffness for longer spans. Important changes in the grid construction have helped to make this grid cost competitive with alternative deck types while still offering the advantages of higher strength-to-weight ratio, better durability and faster installation time.

Because this grid is filled half-depth with concrete it has a much higher strength-to-weight ratio than a common rebar reinforced slab. The half-depth concrete in the grid drops down to full depth at the supports and is typically attached with headed shear studs for full composite action.

This grid style requires the use of a concrete overfill which is the amount of concrete poured over the top of the steel grid. As with all grid reinforced concrete bridge decking, the concrete overfill provides increased stiffness, added corrosion protection for the steel and a smooth riding surface that can be resurfaced, as required, with standard resurfacing techniques.



6.5 inch RB Half Depth • HS 25 Load Table

Main Bar Spacing (in)	Minimum Sectional Properties (in ³ /ft)				Maximum Continuous Clear Span (ft)	Approximate Weight (lbs/sf)	
	Steel Only		Composite Section			Steel Only	Steel & 144#ft ³ Conc
	Top Steel	Bottom Steel	Positive	Negative	Transverse or Parallel		
6	13.9087	13.6836	183.2325	13.7386	17.1	28.3	86.3
8	10.4315	10.2627	160.827	10.3039	15.4	22.4	80.9
10	8.3452	8.2101	145.9349	8.2431	14.1	18.9	77.7
12	6.9543	6.8418	135.1171	6.8693	13.2	17.2	75.6

The information contained herein has been prepared in accordance with generally accepted engineering principles. However, L. B. Foster is not responsible for any errors that may be contained herein. The user of the information provided herein should check the information supplied and make an independent determination as to its applicability to any particular project or application.

Typical Specification

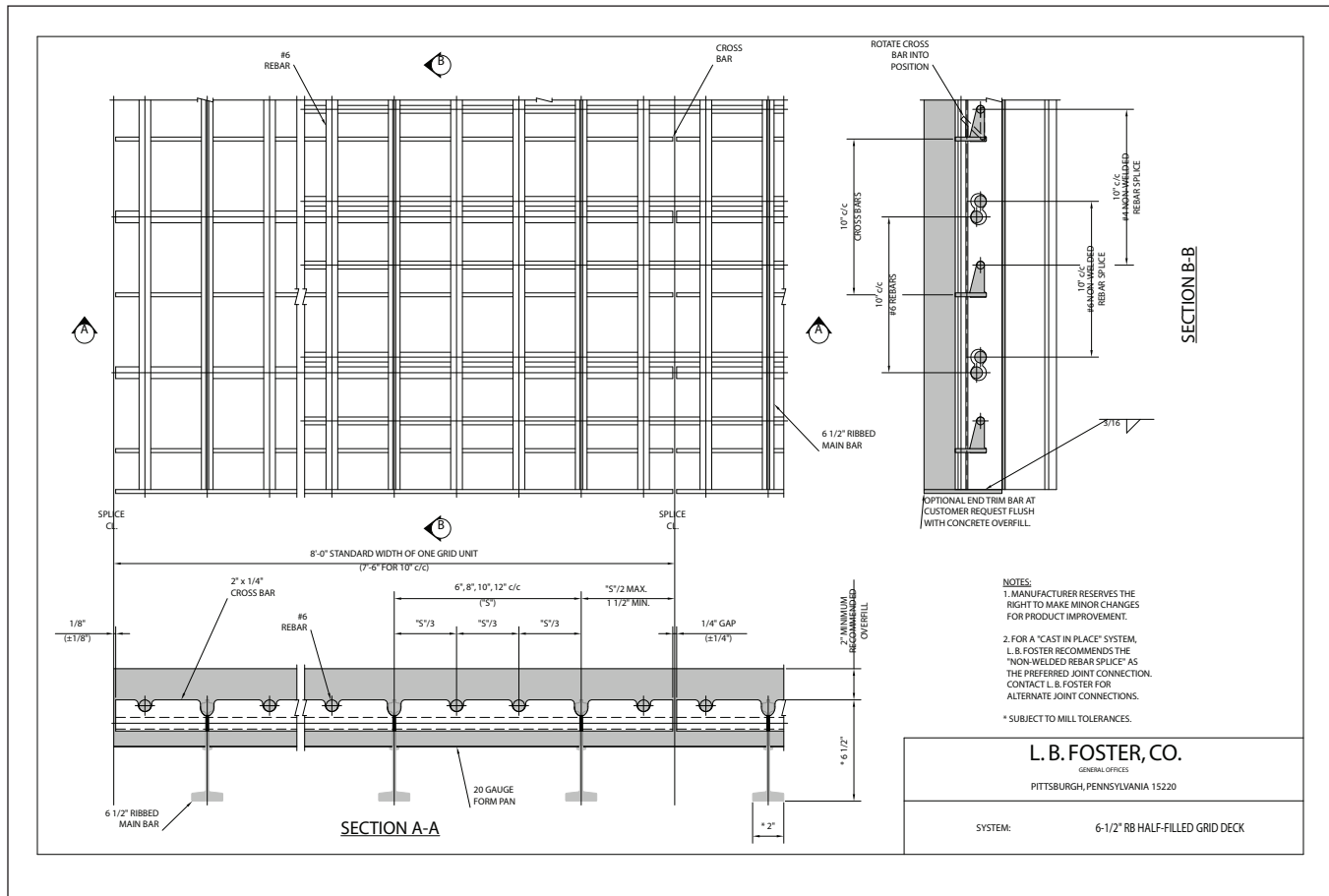
The steel grid bridge flooring shall be 6.5 inch RB Half Depth as manufactured by the L.B. Foster Company, 1016 Greentree Road, Pittsburgh, Pennsylvania 15220 – Phone (412) 928-3452 & Fax (412) 928-3514. The deck shall be manufactured from the following steel elements:

Main Beam (MB)	6 1/2" deep special rolled beam x 8.9 #/LF
Cross Bar (C'Bar) @ 5" c/c	2" x 1/4" flat bar & #6 Rebar - Alternating
Supplemental Bar (2 between each MB)	#6 Rebar

Steel Specification

Steel shall be 50 ksi (A709 Gr. 50 / A572) or 50 ksi weathering (A709 Gr. 50W / A588) Rebar to be ASTM A-615 Gr.60

6.5 inch RB Half Depth



Request manufacturer's standard 4-part product specification for inclusion with your project documents.